

Quick Install

Essential Information for Getting Up and Running Quickly



OnePrint G2 for Windows®

WINDOWS BASED IBM HOST PRINTING SOLUTION

Version 3.0

Welcome

Welcome to the *Quick Install* guide for OnePrint G2 for Windows. Thank you for downloading OnePrint G2 for Windows as a solution to your business requirements and growth. This guide will provide all the necessary information and implementation techniques to install the OnePrint G2 software package.

The OnePrint Web console provides platform independent monitoring, configuration and on-line documentation. Instant reports of the OnePrint performance can be produced from a standard web browser. System administrators can configure and monitor a distributed printing network from any Internet/Intranet connected computer. OnePrint is a fail-safe windows service that installs easily, starts automatically, manages queued print jobs and provides diagnostics information all on the fly. It is an intelligent solution that provides central management and dynamic control over setup, print routing and problem resolution for all distributed LAN-attached printers.

OnePrint can send AS400 or Mainframe print jobs to a large number of predefined Windows based laser or impact printers. With OnePrint you can direct host print jobs to remote branch offices, with true point to point IPDS with full data integrity and security. OnePrint's installation wizard will guide you step by step through the entire installation procedure making the installation automatic and simple.

System Installation Requirements

OnePrint G2 is designed to be installed on a Windows 2003 Server

To ensure adequate performance, make sure that servers, on which you install OnePrint G2, meet the following requirements:

Hardware Requirements:

- One or more processors recommended minimum speed of 1000 MHz or higher
- AMD Athlon XP, MP, 64 X2, Opteron, or Sempron are recommended
- Intel Pentium III, 4, Xeon, Core Duo are recommended
- 512 megabytes of RAM recommended minimum or higher
- A Ethernet Network Interface Card (NIC) 10/100/1000 Mb
- A hard disk – 10 MB minimum free space.

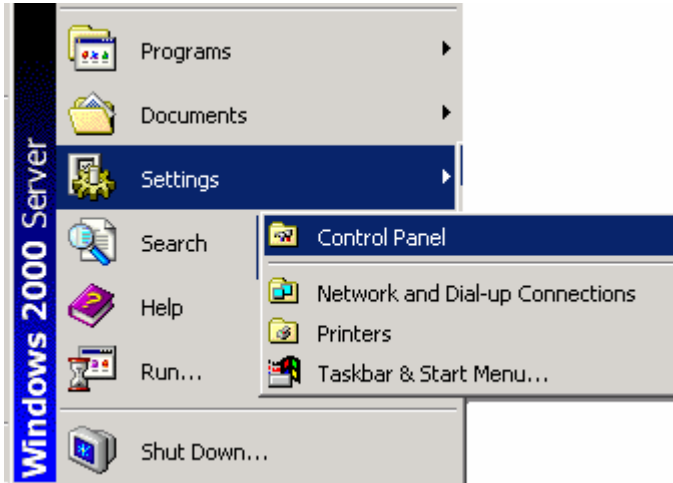
Software Requirements:

- Microsoft Windows 2003 Server Standard, Enterprise or Data Center Edition x86-based Operating System. For demo purposes OnePrint G2 can be installed on Windows XP Professional edition, however to achieve optimal results it is recommended to be installed on the Windows 2003 Server
- Latest Service Pack installed
- Internet Information Services (IIS) installed configured to allow the Active Server Pages (please see below the instructions to allow Active Server Pages)
- One or more printers installed and configured.

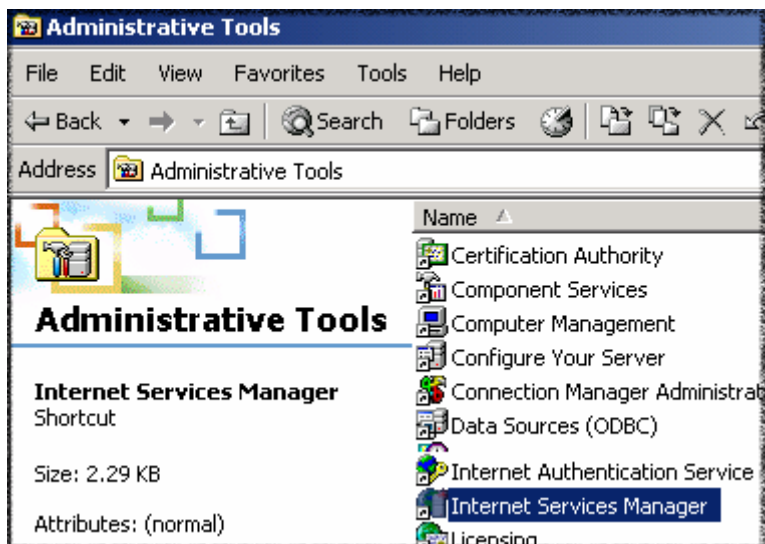
Pre-installation required steps

1. Login as Local Administrator (you need the Local Administrator User ID and Password)
2. For Windows Server 2003 – Active Server Pages allowed. (This step is not required when OnePrint G2 is installed on Windows XP platform)

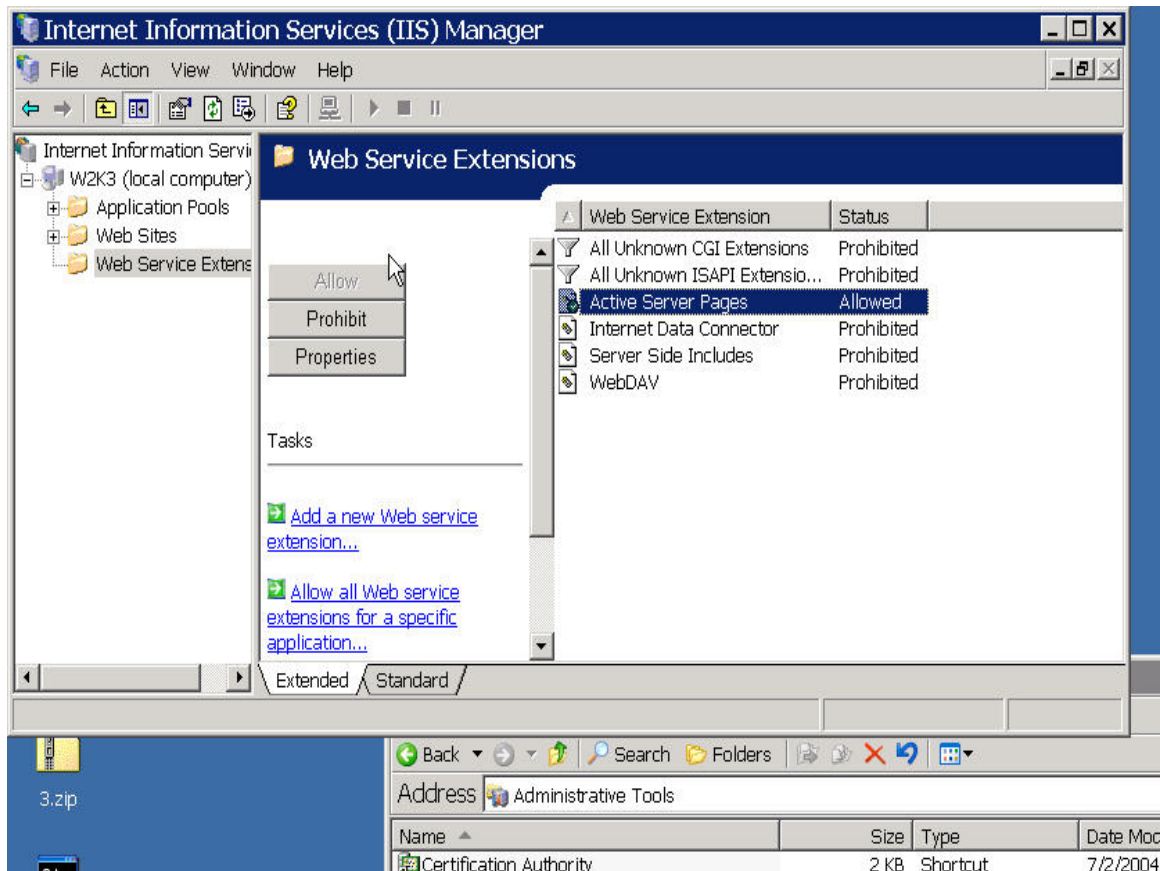
To enable the active Server Pages, from the  menu choose **Settings > Control Panel**.



From the **Control Panel** open **Administrator Tools**  and then double click **Internet Services Manager**.

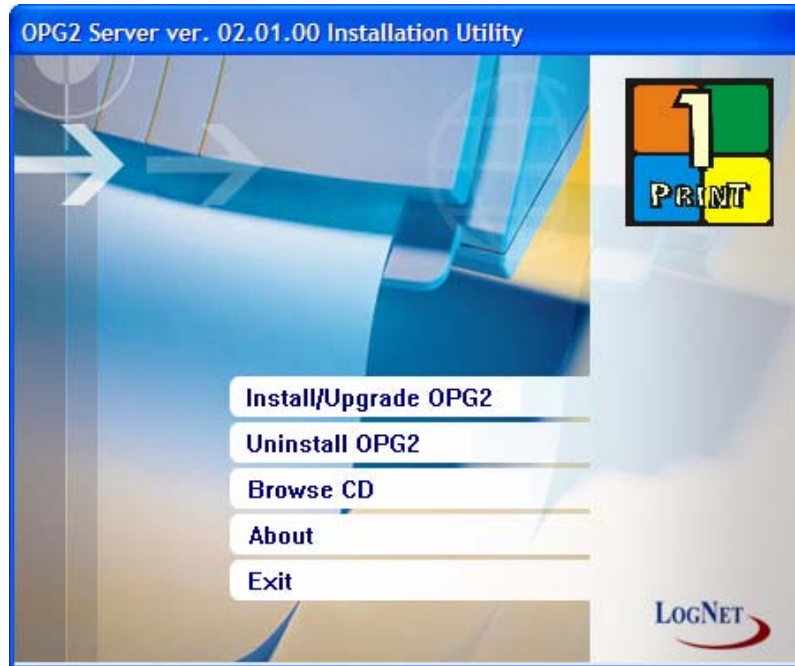


From the **Internet Information Services** window expand “**Web Service Extensions**”. Highlight **Active Service Pages** and click on **Allow**.



Installation

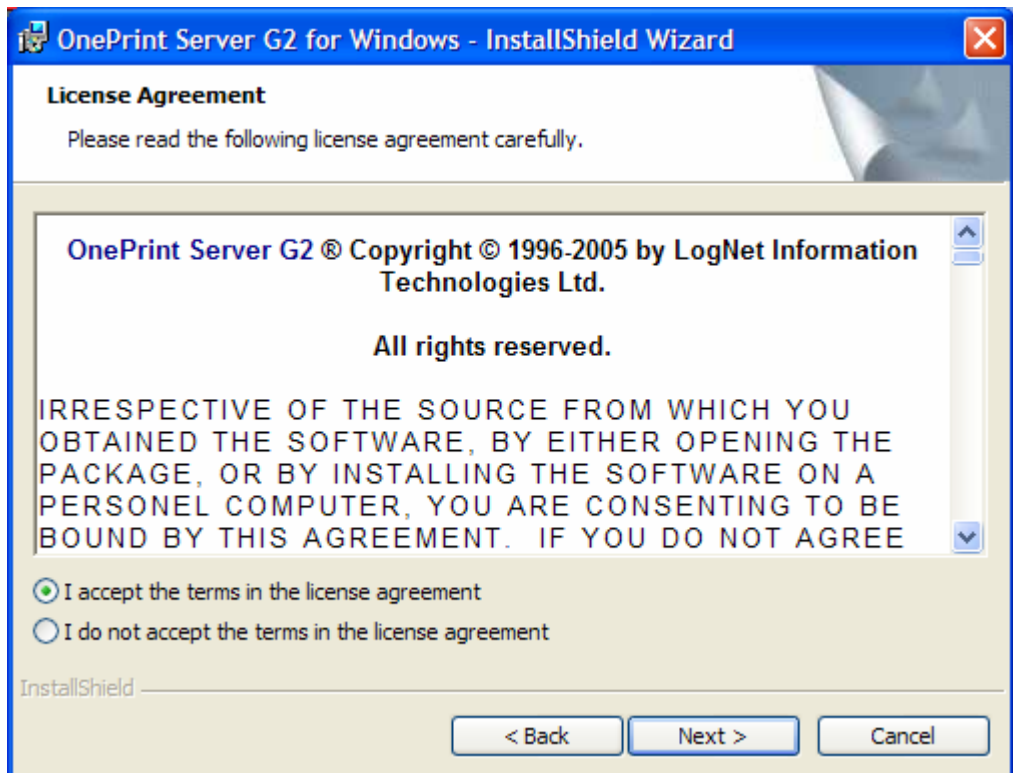
1. Unzip the downloaded file
2. Double click **Setup.exe** to run the program.



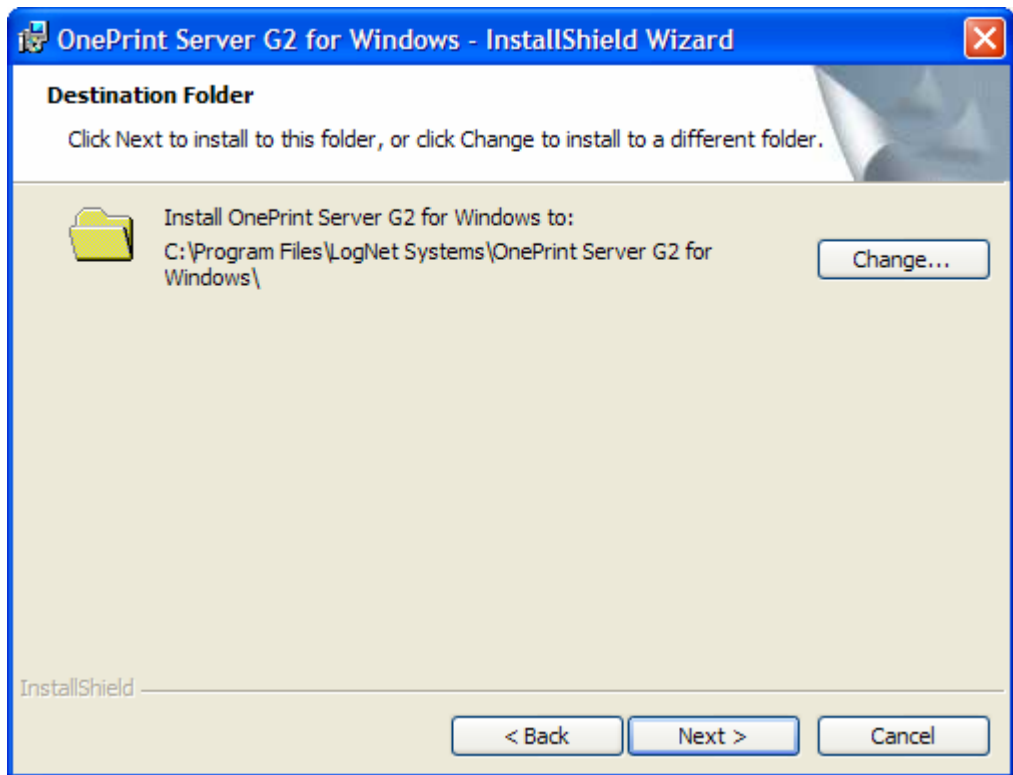
3. Click the Install **OPG2** button.



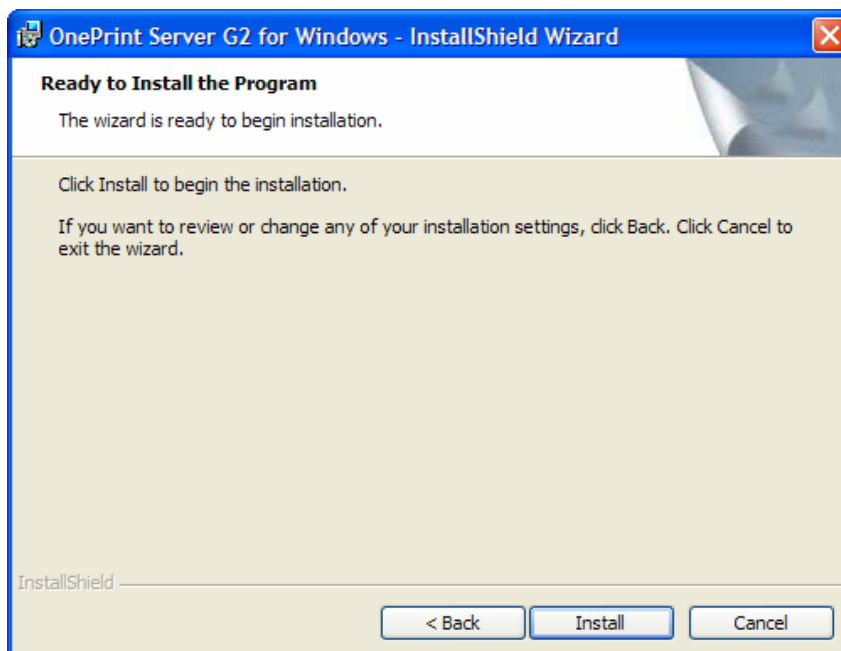
4. Click the Next Button to begin the installation of the new version of OPG2.



5. Click **I accept** check box to accept the EULA and the Click the **Next** button.



6. The Destination Folder window will appear next, if the default installation directory is not desired, click the **Change** button and select the desired directory path. Then click the **Next** button to continue.



7. The Ready to Install window will appear and if all options are satisfactory click the **Install** button to begin the installation process.

OPG2 Installation

Installing OnePrint Server G2 for Windows

Your information

Contact person:

Company:

Phone:

E-mail:

Address:

OPG2 for Windows

Next > Cancel

8. After the Automatic Install process completes, the Your Information window will appear. Fill in the appropriate information and then click the **Next** button.
9. **Note:** If the information fields are not filled-in the installation can not be completed

OPG2 Installation

Installing OnePrint Server G2 for Windows

Define account used for OPG2 WEB based console access

Account Definition:

User Name

Password

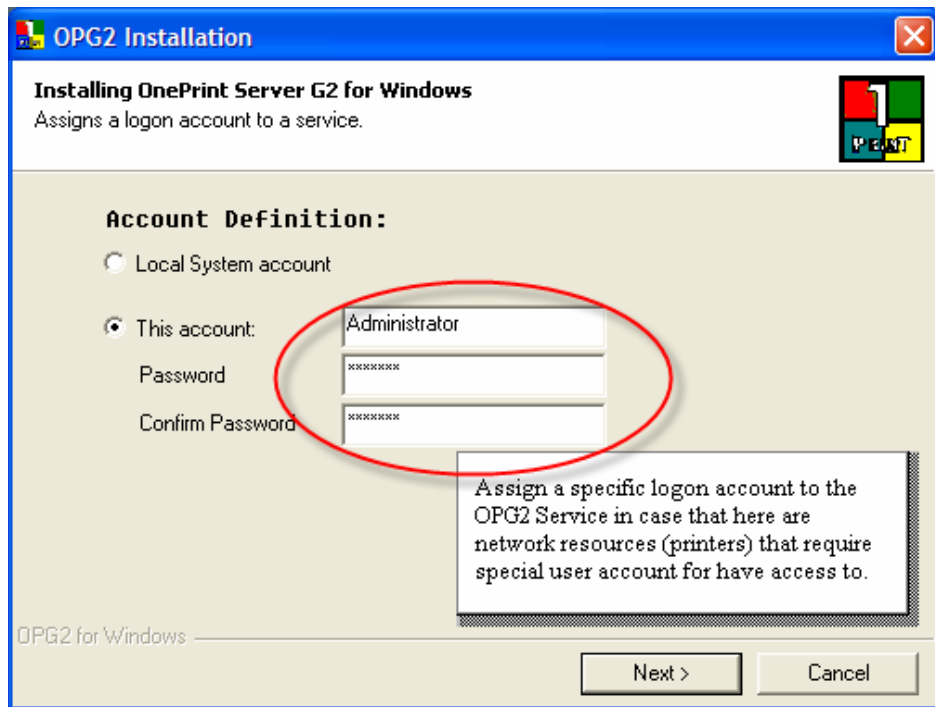
OPG2 for Windows

Next > Cancel

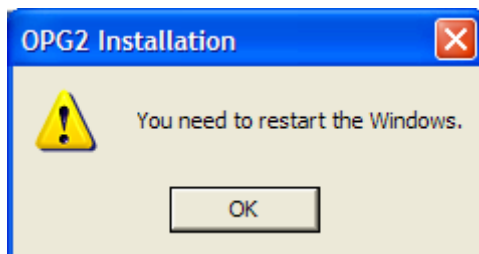
10. Then the Account Definition window will appear and the **User Name** and **Password** required must have local Administrator and Domain Print Controller privileges in order to function properly. Then click the **Next** button to continue.

Important: If an account and password is entered that does not have these privileges, the OPG2 service will fail to run and obtain communication privileges with the Internet Information Services (IIS) to send and receive the print jobs to the printers.

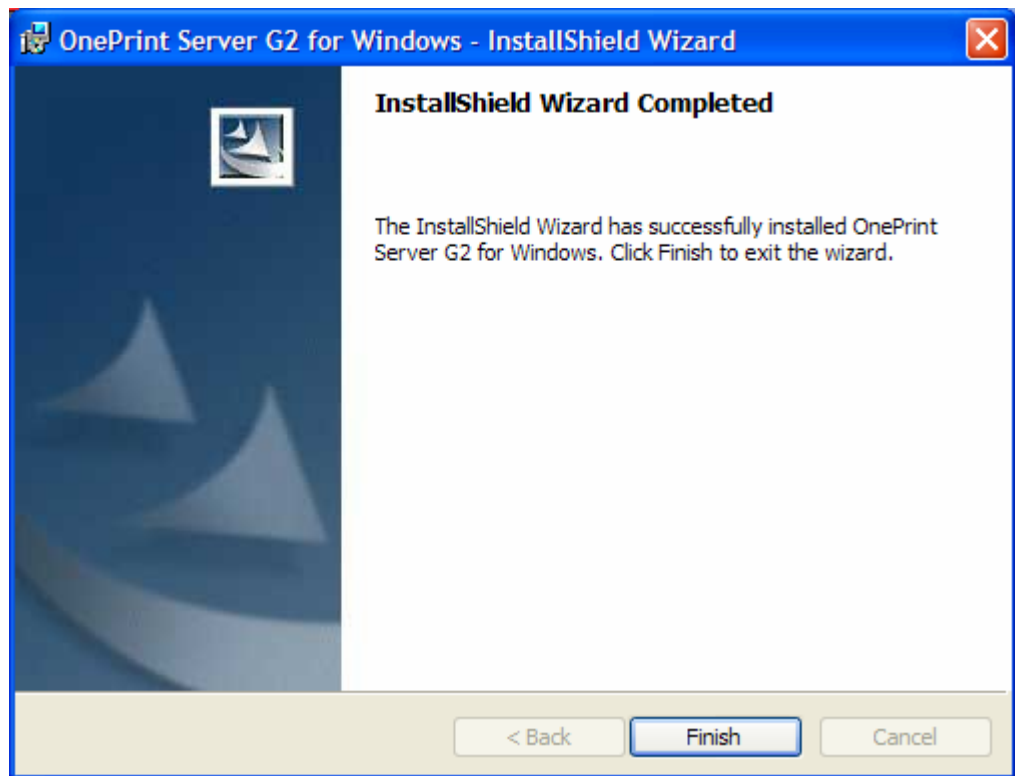
11. The Account Definition Window will appear next. It requires the same **Account Name** and **Password** filled in that must have local Administrator and Domain Print Controller privileges in order to function properly. Click the **Next** button to continue.



12. Next a notice to restart windows will appear. Click **OK** to continue.



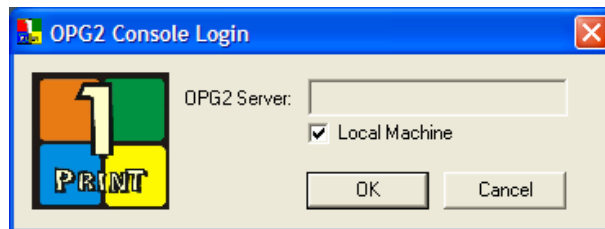
13. Lastly the Install Wizard Completion window will appear and then click the **Finish** button to complete the install process.



14. Then click the **Start Menu** and click the **Shutdown button**. Select the **Restart Windows** option and click the OK button to reboot the Windows O/S.

OnePrint G2 Console – Quick Start

In the Windows Operating System click on the **Start Menu, Programs, LogNet Systems, OPG2 for Windows** and then click on **OPG2 Administration Console** button to Login. Then click the **OK** Button to continue.



NOTE: It is also possible to access the OPG2 console thru the **Internet Explorer** browser system by typing in the IE Address Bar: "**http://localhost/opg2console**" or, for remote connection, type in the IP Address of the OPG2 server followed by **opg2console** (for example <http://10.84.149.35/opg2console/>, where 10.84.149.35 is the IP address of the server running the OPG2 software).



Click the **User ID:** field and type "**administrator**" all in lowercase. Then click the **password** field and type "**opg2**" all in lowercase. Then click the **Enter** button.

Technical Support Options

Online: Product direct support may be included with your purchase from Integrated Print Solutions, LC. Please visit <http://www.ipslc.com/support.html> for details.

Conditions: Support services are subject to then-current prices, terms, and conditions, which are subject to change without notice.

Evaluation versions: Evaluation versions of this product are not supported.

Professional Support Options

Integrated Print Solutions, LC. offers OnePrint G2 for Windows® customers a range of service and support options, to allow users to select the support level that best fits their particular needs. Information on each service is briefly described below, and links to further information are available in each case.

North America Options	Benefits of Service
Incident-based support Assistant Support from Integrated Print Solutions, LC for break/fix solutions Submit your incident online worldwide support@ipslc.com Phone support: IT Professionals (972) 769-1900 Fax support: (972) 769-2800	<ul style="list-style-type: none">• Quick fix needs• Help with immediate error after installation
IPSLC Systems Advisory Services Short-term and proactive assistance for specific design, development or deployment issues via phone. (972) 769-1900	<ul style="list-style-type: none">• Installation and configuration services• Deployment and migration services• Performance optimization services• Proactive fault-tolerance planning services

Integrated Print Solutions services are subject to their then-current prices, terms, and conditions, which are subject to change without notice.