



# The Enterprise AFP/IPDS Printing Solution

## OnePrint G2 for Windows®

- *Software-only solution to your printing requirements*
- *Improves productivity*
- *Reduces network congestion*
- *Gives better response to printing needs*
- *Lowers capital and operational costs*
- *Eliminates image clipping due to differences between IPDS and ASCII printers*
- *Provides support across your network*
- *Runs on Windows 7, 10, Server 2003, 2008, 2012 platforms*
- *Extends AFP/IPDS printing capabilities*
- *Uses existing LAN printers for IPDS documents leveraging your investment in Client-Server technology*
- *Allows connections to a Mainframe and an AS/400 (over TCP/IP network)*
- *Enables a large number of simultaneous host connections with Mainframes and/or AS/400s running a TCP/IP stack*
- *Runs with minimal intervention*
- *Delivers host documents where and when you need them*
- *Offers user friendly logfile for easy error detection and correction*
- *Allows user to reconfigure specific ports in case of a printer malfunction*
- *Offers full error recovery capabilities*
- *Full support of Intelligent Print Data Stream (IPDS) resources*

**OnePrint G2** is the latest generation of the most powerful and versatile server-based print management platform that enables Mainframe and/or Midrange print job distribution over TCP/IP to any network attached printer (laser, inkjet or dot-matrix).

### Supports Popular Printer Types

Each **OnePrint G2 for** allows you to distribute print jobs on a large number of printers. A virtually unlimited number of printers can be attained by adding more **OnePrint G2** units.

**OnePrint G2 for** Enables delivery of AFP/IPDS host documents to any predefined Windows® attached ASCII printer. Regardless of the printer type

the results are the same—host documents will always be printed exactly the way you expect them.

### IBM Host Print Functionality

**OnePrint G2** handles host print jobs in exactly the same way as an IBM TCP/IP attached IPDS printer.

It provides central management and dynamic control over setup, print routing and problem resolution for all distributed LAN-attached printers. Your personnel continue working like before but with the added benefit of dynamic web based management and reconfiguration. You can print any host document to any target printer at any time.



## Powerful Management

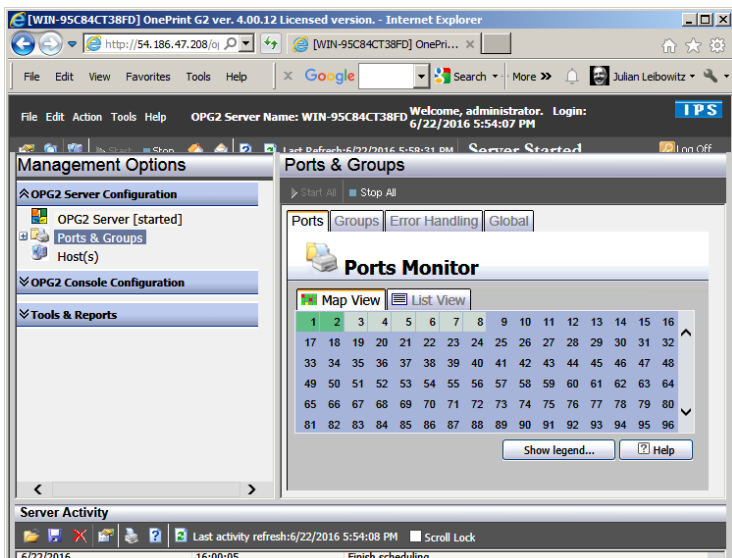
**OnePrint G2 for Windows®**, designed with your network managers in mind, provides host-centric control with the efficiency of a client server application. Use a standard Web browser to manage and configure **OnePrint G2 for Windows®** settings, monitor status, track the latest print jobs and browse to online support documentation.

## Leverages your Investment

**OnePrint G2 for Windows®** helps you get the most of your existing technology. While other solutions require expensive and repeated investments in controllers, printers or printer interface devices, OnePrint G2 works with your existing enterprise network printing platforms.

## Web Console

The Web Console provides the System Administrator platform independent monitoring, configuration, and on-line documentation of the **OnePrint G2 for Windows®** from a standard Web browser (Internet Explorer, Edge, Chrome).



## Optional Features

- FAX server support (Bit-mapped PCL)
- PDF output through third party software

*OnePrint is a registered pending trademark. All other products and company names are trademarks of their respective owners. Due to continuing product development, specifications, capabilities and features are subject to change without notice.*

## TECHNICAL SPECIFICATIONS

### INPUT

- **TCP/IP**
  - **zSeries (Mainframe)**
    - PSF/MVS or PSF/VM 2.1 or higher
    - IBM TCP/IP 2.1 or higher
    - TCP Access 3.1 or higher
  - **iSeries (AS/400)**
    - OS/400 version 3.1 or higher
- **PRINTING EMULATION**
  - **PAGE PRINTERS** IBM 3812, 3816, 4028
  - **LINE PRINTERS (IMPACT)** IBM 4224, 4230
- **UPSTREAM CONNECTIVITY**
  - **Encapsulated IPDS** over TCP/IP (PPD/PPR)

### OUTPUT

- **DOWNSTREAM PRINTING**
  - **Windows Print Manager** (Predefined Windows Printers)
  - **Windows Queues**
- **ASCII PRINTER EMULATION**
  - **LASER** PCL4, PCL5, PCL5e
  - **INKJET** PCL Level 3
  - **MATRIX** Epson FX and LQ
- **PRINTING FEATURES**
  - **Scaling**
  - **Clipping**
  - **Paper input/output tray control**

### MANAGEMENT

- **ONEPRINT G2 MODELS**
  - **Installed as Windows Service**
  - **IIS remote management enabled**
- **REMOTE MANAGEMENT**
  - **WEB based console** for configuration and monitoring

### SOFTWARE REQUIREMENTS

- **Windows 7, 10, Server 2003, 2008 or 2012**
- **Internet Information Services (IIS) installed**

### HARDWARE REQUIREMENTS

- **PROCESSOR** – Server Class INTEL or AMD CPU
- **RAM** – Minimum of 1 GB
- **DISK SPACE REQUIRED** – 10 MB



**Integrated Print Solutions, LC**  
**PO BOX 260385, Plano, TX 75026-0385**  
**Phone: 972.769.1900**  
**Fax: 972.769.2800**  
**www.ipslc.com**